



# MicroPress® Series 7.0

SERVER & CONTROLLER SOLUTIONS

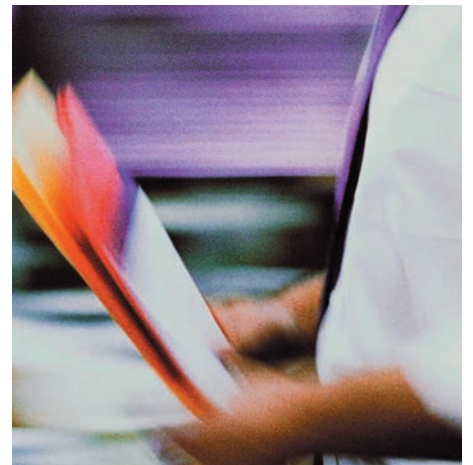


Scalable  
Flexible  
Accurate



One server that can take your entire workflow anywhere you want to go.

EFI MicroPress makes a quantum leap with the new ProSeries 7.0. MicroPress industry leading editing tools, workflow automation and productivity features deliver a new level of performance with a fresh, easy to use GUI, powerful Media Catalogue, on screen Colour Management tools with visual feedback, WYSIWYG editing views with page and chapter level control and much more. ProSeries 7.0... the next step in Print-on-Demand.



# Scalable Digital Workflows



The EFI MicroPress® is perfect for critical production print environments, with productivity features that optimise speed, maximise efficiency, minimise downtime and ensure job completion.

## Cutting Edge Productivity and Reliability.

The MicroPress ProSeries 7.0 Software leverages the latest in platform and operating system technology to deliver powerful digital prepress and workflow management to industry leading black & white and colour printers. MicroPress Servers allow even the most basic environments to quickly plug into digital workflows and are easily integrated into existing environments and emerging technologies.

MicroPress Servers maximize productivity and print quality for all Print-on-Demand environments. Even entry level configurations make an immediate impact with advanced make-ready tools, optimised job throughput and unmatched quality. The flexible, scalable design provides a growth path to meet future demands with colour and black & white engines, RIPs and software features easily added.

### **MicroPress Production Workflow Server**

A power server designed to meet the demands of heavy production print environments, driving up to 12 devices with flexible, powerful workflow and complete fault-tolerance.

### **MicroPress Professional Workflow Server**

A fully featured Print-On-Demand server that combines patented workflow and clustering technologies, driving up to four devices.

### **MicroPress Prodigy Workflow Server**

A cost effective solution that delivers powerful digital prepress and workflow management to single engine configurations.





The EFI MicroPress is built on the latest proven technologies to provide unmatched productivity. Maximised engine speed and sophisticated error recovery combine with our patented clustering technology to elevate print engine performance to levels that were previously unachievable.

## Expert Tools For Digital Prepress

**TruePrint**

Drives each device at its maximum speed regardless of page content or number of pages in a document.

**TrueRecover**

Page and job level error detection and recovery across one or multiple devices are automatically handled without manual intervention, ensuring completion of mission critical jobs.

**TrueCluster**

Job parsing across multiple devices gives you the flexibility to print multiple jobs simultaneously or large jobs quickly, easily accommodating variations in job size and workflow.

**PowerRIP**

A second, third or even fourth MicroPress RIP on a single server allows simultaneous processing of multiple files, increasing throughput and productivity and ensuring that large files do not create a production bottleneck.

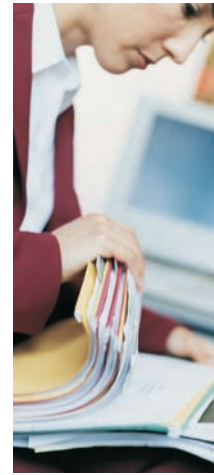
**Universal GUI (Graphical User Interface)**

A single GUI that controls multiple engines and accurately reflects device features in a consistent format improves productivity by consolidating activity and reducing learning curves on new or different engines.



- TruePrint: Maximises Engine Speed**
- TrueCluster: Maximises Output**
- TrueRecover: Maximises Performance**
- PowerRIP: Maximises Throughput**
- Universal GUI: Maximises Operation Efficiency**

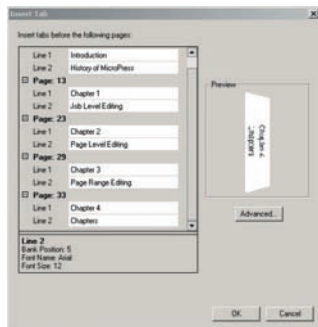
TrueEdit dramatically improves productivity by streamlining workflow and automating manual processes such as hand collating, tab inserting, document re-numbering and booklet creating.



## TrueEdit Features

TrueEdit is a suite of advanced make-ready tools that enable you to prepare already RIPped documents for printing. Digital prepress capabilities give you total independence from the original application and author to make job and page-level changes.

Post RIP edits do not require re-processing, allowing files to print immediately after edits have been made.



Tab Editor

### TAB EDITOR FEATURES

Insert multiple, edit all, Multi-line and Bitmapped tab support

### TAB BUILDER FEATURES

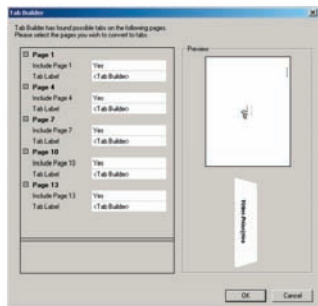
Detect text in margins, create tab pages and place text on tab

### LAYOUT MODES

Choose layout mode to quickly view document layout, for easy page level settings and tab insertion

### PAGE LEVEL MEDIA SELECTION

Select media from Page Properties for individual pages or page ranges



Tab Builder

### SELECT PAGES BY ATTRIBUTE

Identify pages based on selected criteria (Paper Size, Media Type, Tray or Page Type)

### CHAPTER (TAG) SUPPORT

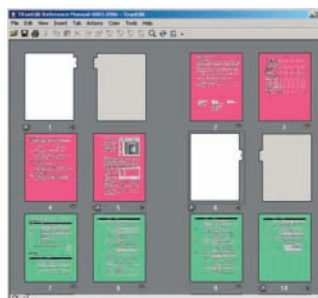
Allows creation of chapters, easily identified in TrueEdit and enables many TrueEdit functions to be applied on a chapter basis (Add Tabs, Drag & Drop, Apply Property, Apply Action, Add Header, Footer, Number, etc.)

### ICC SUPPORT

Use device and monitor ICC profiles to display colour jobs for accurate colour representation

### WYSIWYG OPERATOR VIEW

Displays page colour, tab and tab text, subset staple ranges, chapters, rulers and guidelines for error-free document building.



WYSIWYG

### IMPOSE

Advanced control supports custom layouts and templates, improving flexibility and enabling almost any arrangement. Quickly creates booklets for professional output.

### VARIABLE DATA

Automates form creation and mail merge applications

## Features:

- Cut, Copy, Paste
- Insert & delete pages
- Add lines, arrows and objects
- Set unique page settings
- Edge Mask, Margin Offset, Creep
- Clean and straighten pages
- Reformat for punching and stapling
- Export job or page range to PS, PDF, or TIFF
- Save selected area as a file, Paste from file
- Convert to Colour Insert, Insert Colour Insert(s)
- Insert blank page(s), Insert alternate size blank page
- Merge RIPped files
- Number, Header, Footer
- View Thumbnails
- Scale to Gray
- Scale, Rotate, Flip, Invert
- Deskew, Despeckle, Clear
- Paint Black
- Clear Edges
- Tumble page range-all, even, or odd
- Edge Masking, Margin Offset, Gutter

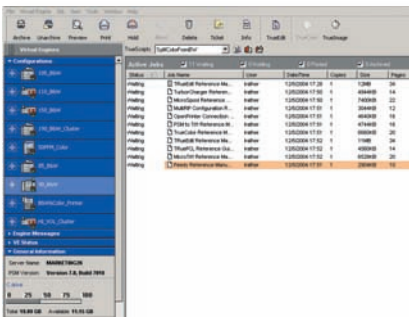
\*With TrueEdit Remote most of these capabilities are available on the desktop, allowing multiple editing sessions and bringing robust make-ready to unattended environments.

# Flexibility And Control



## Job Management Features

MicroPress Servers provide Print-On-Demand environments with advance job management and complete engine control to optimise workflow.



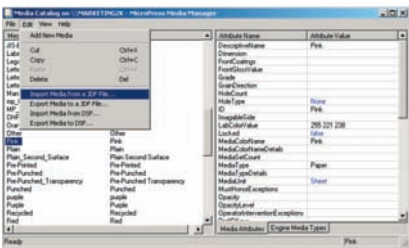
PrintStation Manager

### PrintStation Manager

The control panel for all jobs and engines controlled by the MicroPress, the newly designed PrintStation Manager retains all of its power in an intuitive, GUI that increases ease of use and productivity and reduces learning curves.

### Media Catalogue

Allows operators to import, export and manage media entries using terminology familiar to users and provides seamless integration to EFI Digital StoreFront. Increases ease of selecting job and page level media, and reduces confusion and errors.



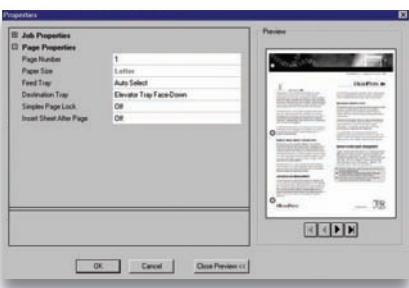
Media Catalogue

### Job Ticket

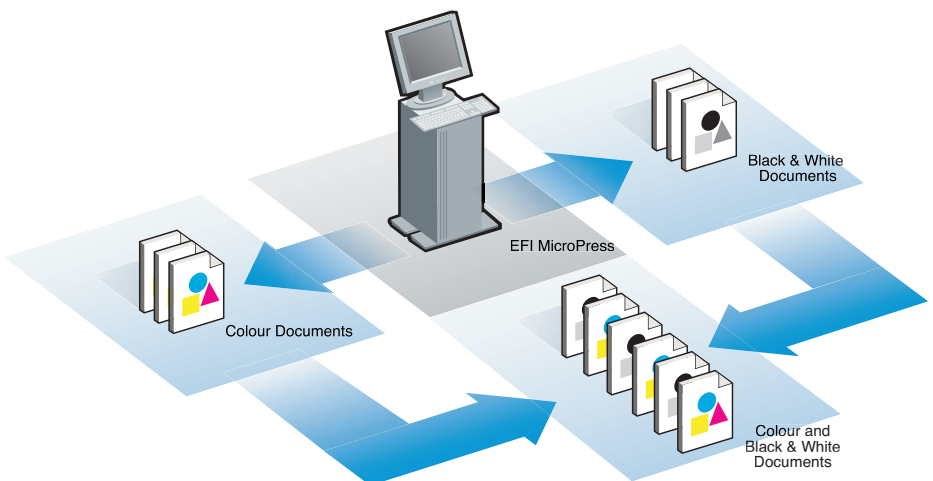
Populated from Digital StoreFront Express web submission ticket and editable in PrintStation Manager, the job ticket improves productivity and reduces errors. Alerts operator to conflicts between job specs and engine capabilities when dragging jobs between unlike engines, reducing misprints and associated waste.

### Colour and Black & White Split

Automatically splits colour and black & white pages to appropriate devices, eliminating need for manual collation and reducing costs.



Job Ticket



### Colour and Black & White Split

Automatically splits colour and black & white pages to appropriate devices, eliminating need for manual collation and reducing costs.

The MicroPress job management features automate and streamline workflow for busy print environments and tight engine control gives users the power to select the finishing combinations they need to get the results they want.



#### Auto Archive

Automates archiving to any network location, improving productivity and reliability and optimising storage resources. Makes search data available to DAM applications for powerful content management.

#### TrueScript

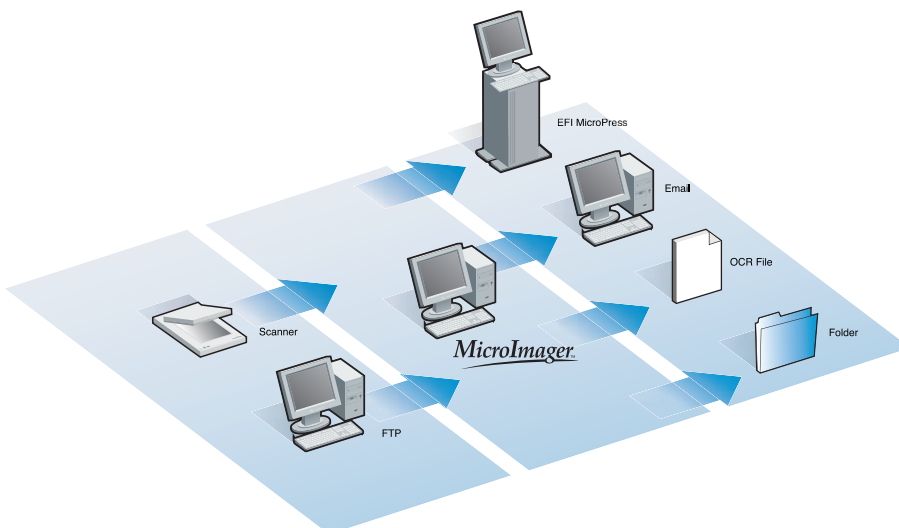
Automates frequently performed tasks to reduce manual activities and streamline workflow.

#### Open Printer Connection Virtual Engine

Routes RIPped jobs to PCL printers, allowing almost any device on the network to take advantage of MicroPress make-ready tools.

**Tight integration to print engine allows the MicroPress to leverage all engine features, including extensive finishing capabilities:**

- Select subset stapling options on a page range basis
- Select multiple subset features for overlapping page ranges
- Specify tray pulls for multiple non-sequential pages simultaneously
- View job and page level features
- Preview jobs
- Schedule jobs
- Change ICC profiles and tone curves
- Calculate toner coverage
- Export job info to third-party billing tools



### MicroImager™

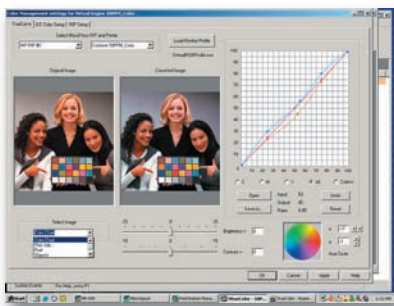
A powerful document imaging and workflow solutions that streamline the process of scanning, preparing and distributing hard copy documents.

# Professional Tools for Accurate Colour



## TrueColor Features

MicroPress' patented post-RIP calibration, colour matching and user adjust technologies improve user productivity and results.



Colour Editing

### Image Editing

Allows easy adjustment of RIP functions using actual job or canned image with real-time feedback on screen. Provides an intuitive way to adjust colours with instant visual feedback on changes. Reduces trial and error printing and waste.

### Gammatic

Calibrates single, multiple and clustered devices to a universal standard for consistent colour output. Post RIP calibration ensures reprinted jobs match previous runs.

### ConTune

Allows user adjustments to ensure that documents printed across multiple engines appear identical.

### ICC Profile Processor

Automatically recognises RGB, CMYK, Lab and Spot Colours, even when mixed on the same page, and intelligently maps them to the correct CMYK values for each printer.

### Colour management GUI

Gives users complete control, allowing them to select ICC profiles and rendering intent per image type. Mouse flyby descriptions and images improve user understanding and reduce learning curve.

### Spot Colour Matching

Pantone® calibrated RIP provides a unique spot colour handling that yields the most accurate Pantone matching in the industry. Spot colour files can be printed as swatch sheets for easy colour selection.

### TrueCurves – Universal Curve Creation

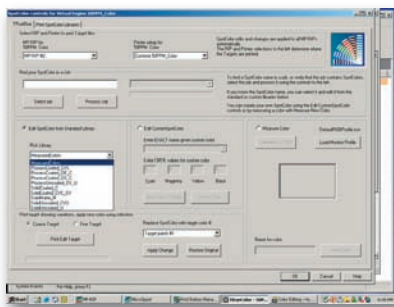
Makes curve creation quick and easy with mouse drag functionality and anchor points for sophisticated fine-tuning. TrueCurves can be applied to the job as a ColorCurve and also to the RIP as a Tone Curve or as an adjustment to calibration, allowing pinpoint control in a few simple steps.

### Multiple proofing emulations per printer

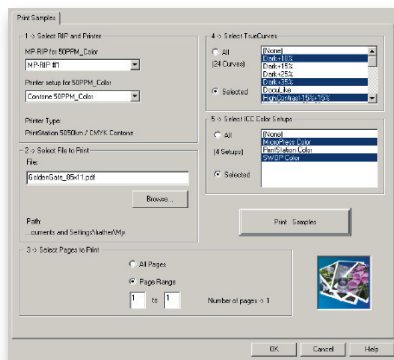
Allows a single engine to produce various proofing emulations by virtue of selectable printer queues with different colour setups.

### TrueBlue Spot Colour Editing

“Quick Pick” method simplifies getting spot colours the way you want them. Users can edit colours from a Spot Colour Library or a custom spot colour in their job.



TrueBlue



Print Samples

MicroPress' patented post-RIP calibration, colour matching and user adjust technologies improve user productivity and results.



In addition to superior execution of fundamental requirements, MicroPress provides image management features that are not available in other offerings:

#### **Thumbnails**

Prints multiple thumbnails of a print job on a single page, each with a different tone curve applied for easy comparison.

#### **SoftProof**

RIP to TIFF for easy comps of layout, RGB intercept & fonts. For colour critical users, colour can be proofed on screen by using a colour aware application such as Photoshop®. Soft proofing saves time and money, identifying issues before resources are committed to the job.

#### **Export / Import**

Export sections of a RIPped page as a TIFF file for editing in an application like Photoshop. Edited images can be pasted back to the page for immediate re-printing.

#### **Post RIP Colour Adjust**

Adjust CMYK tint, contrast and brightness on RIPped jobs or apply custom CMYK curves to the job for highly customisable colour rendering. Adjusted files do not need to be reRIPped and are available for immediate printing.

#### **Press Simulations**

MicroPress Universal Servers ship with 17 press/proof simulations as well as support for custom profiles.

- Hot Folders
- Paper Simulation
- Trapping
- Multiple
- Plate printing
- DCS capable
- Local/Decentralised colour matching
- TIFF/IT (optional) ...and many more.



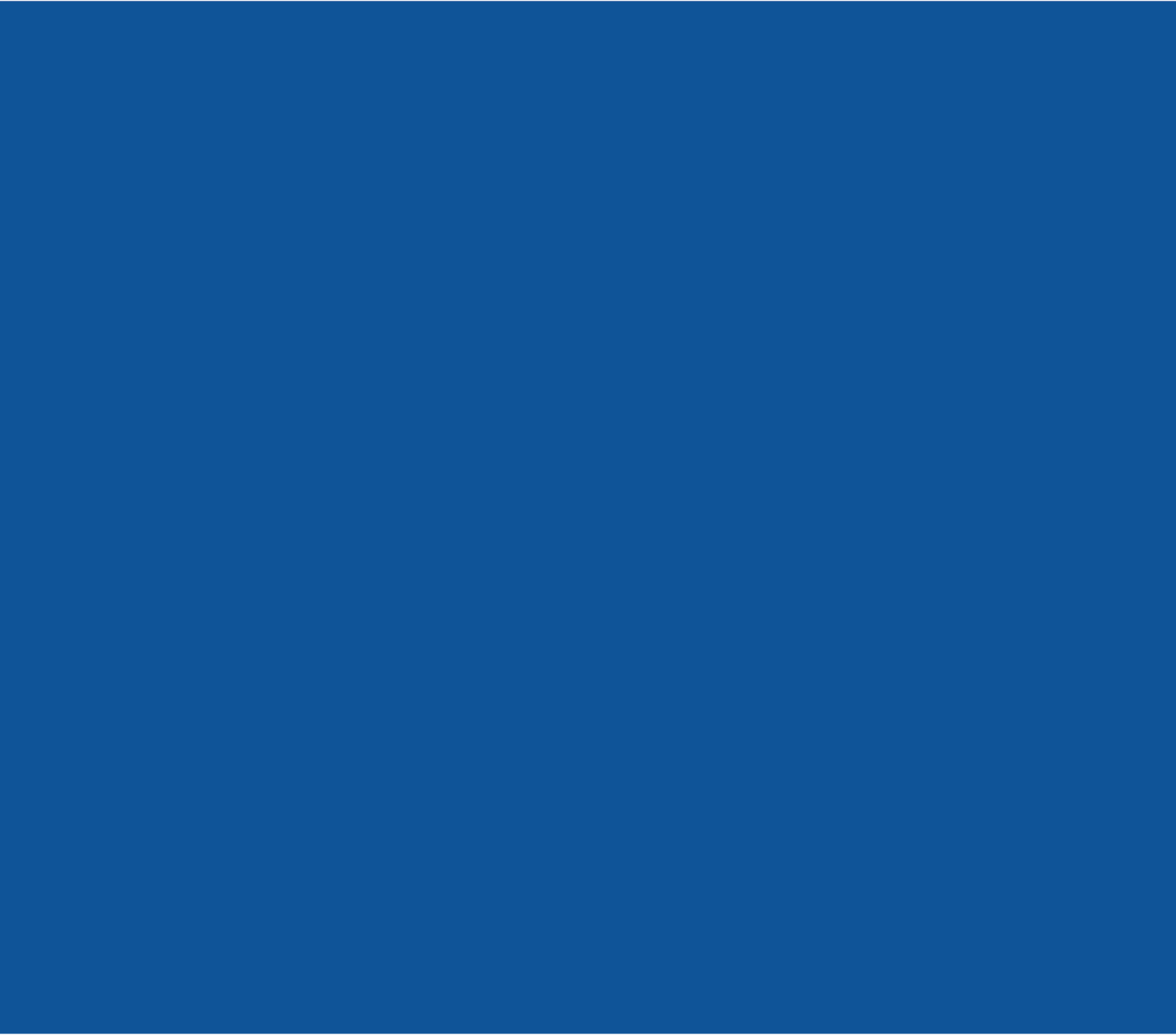
The most complete package  
in the industry.

EFI MicroPress ProSeries 7.0 Servers encapsulate production print workflow into a single server, eliminating the need to patch together a workflow from a variety of applications and plug-ins. MicroPress integration into the EFI workflow system gives users a single source solution that reduces problems with conflicting versions or unexpected upgrade results that occur with multiple vendor solutions. EFI is the only vendor who can provide this, and EFI MicroPress ProSeries 7.0 is the solution for serious production printers.



<b>Feature</b>	<b>Prodigy</b> Drives a single engine	<b>Professional</b> Clusters up to 4 engines	<b>Production</b> Drives up to 12, clusters 8 engines
TRuePrint	S	S	S
TRueCluster	N/A	S	S
TRueRecover	S	S	S
MicroPress RIP	S	S	S
PowerRIP (2ndRIP)	N/A	O	S
TRuePCL	O	O	S
TRueColor	N/A	S	S
TRueEdit	S	S	S
Remote TRueEdit	O	S	S
TRueScript	O	O	S
Auto Archive	S	S	S
Annotations	S	S	S
OCR	O	O	S
Calculate toner coverage	S	S	S
Export job info to third-party billing tools	S	S	S
MicroSpool	O	S	S
Microlmager	O (separate PC)	O (separate PC)	S
Hot Folders	S	S	S
SoftProof	S	S	S
Paper Simulation	N/A	S	S
Multiple Plate printing	N/A	S	S
Automatic Solid colour, RGB, CMYK, Lab	N/A	S	S
Digital StoreFront	O (separate PC)	O (separate PC)	O (separate PC)

In the chart above, S indicates Standard, O indicates Optional features



EFI B.V, Boeing Avenue 201-207  
1119 PD Schiphol-Rijk  
The Netherlands  
tel +31 [0]20 658 8000  
fax +31 [0]20 658 8001

EFI Ltd, Stonebridge House  
Padbury Oaks, Old Bath Road  
Longford, Middlesex UB7 0EW  
United Kingdom  
tel +44 [0]20 8476 7676  
fax +44 [0]20 8476 7636

[www.efi.com](http://www.efi.com)

Auto-Count, ColorCal, ColorWise, CommandWorkStation, EDOX, EFI, Fiery, the Fiery logo, MicroPress, Printcafe, PrinterSite, Prograph, Proteus, and Spot-On are registered trademarks of Electronics for Imaging, Inc. in the U.S. Patent and Trademark Office and/or certain other foreign jurisdictions. Bestcolor is a registered trademark of Best GmbH in the U.S. Patent and Trademark Office. AutoCal, Digital StoreFront, DocStream, Fiery Link, FreeForm, Hagen, Intelligent Device Management, Logic, OneFlow, PrintFlow, PrintMe, PrintSmith Site, PrintSmith, PSI Flexo, PSI, SendMe, Splash, VisualCal, WebInstaller, WebScan, WebSpooler, WebStatus, WebTools, the EFI logo, and Essential to Print are trademarks of Electronics for Imaging, Inc. Best, the Best logo, Colorproof, PhotoXposure, Remoteproof, and Screenproof are trademarks of Best GmbH. All other terms and product names may be trademarks or registered trademarks of their respective owners, and are hereby acknowledged.

© Electronics for Imaging, 2005

MicroPress is an officially supported product of Ricoh Europe B.V.